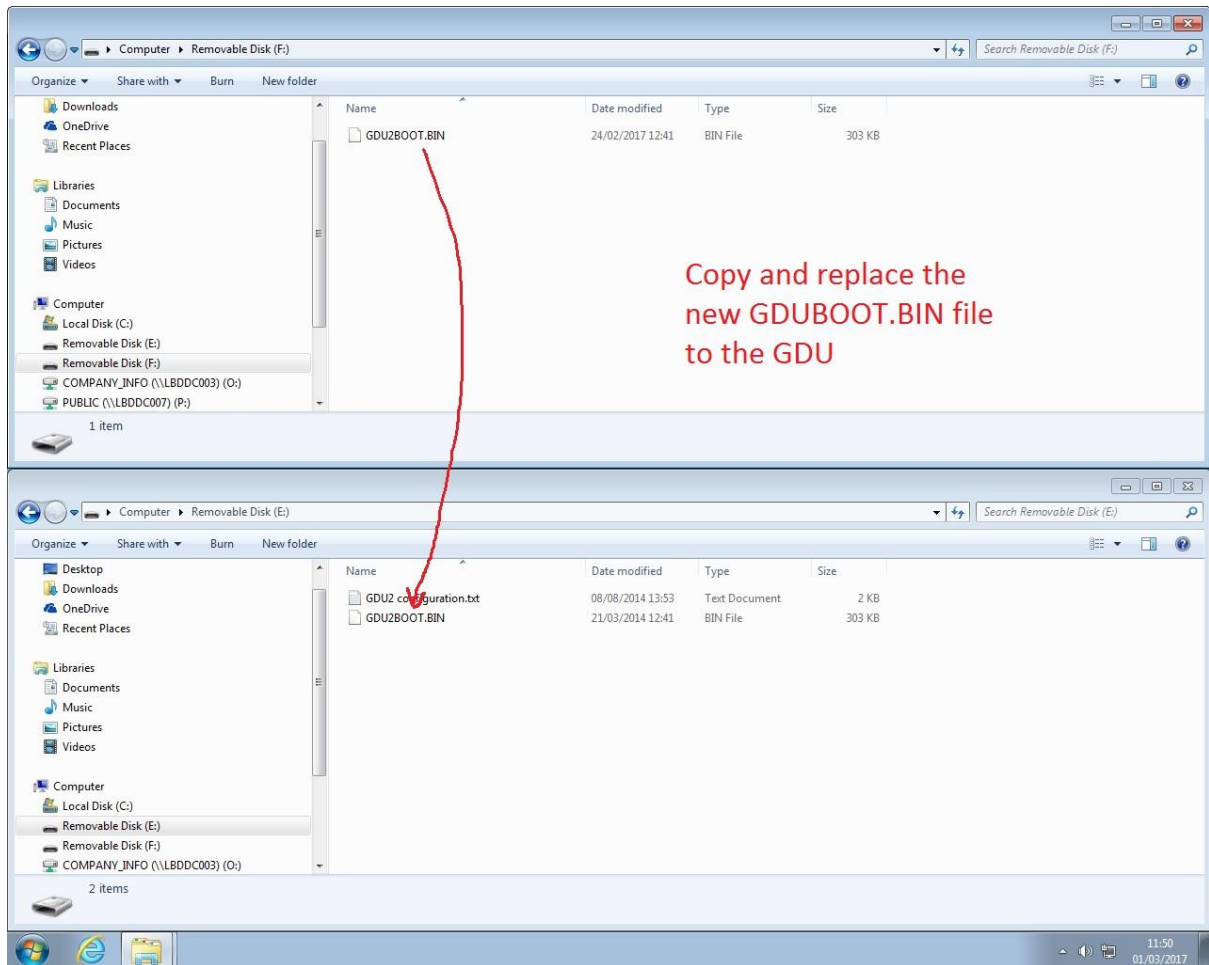


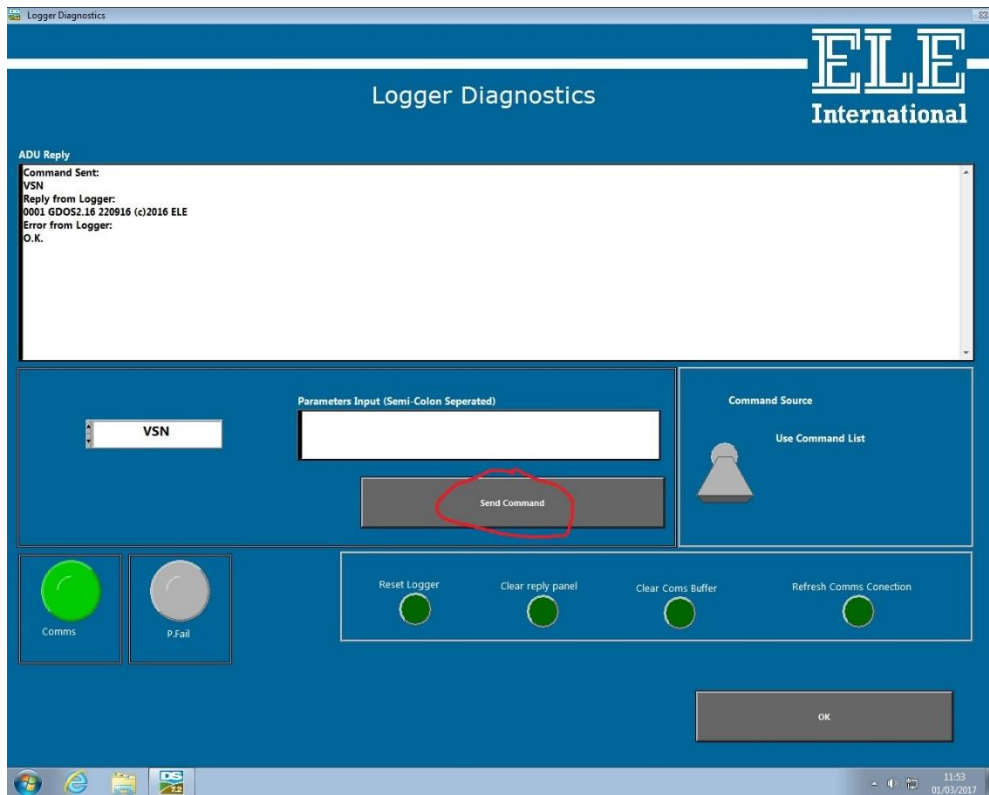
Updating the Firmware on a GDU2 CPU

- 1) Connect the GDU to the PC via the USB cable
- 2) The GDU should appear on the PC as a Removeable Drive of size 1.83GB
This an SD card on the GDU CPU2
- 3) Copy the latest GDU2BOOT.BIN to this SD card



- 4) Disconnect the USB card when the file is copied
 - 5) Power off the GDU for 5 seconds
 - 6) Power on the GDU and confirm the CPU card LEDs sequence slowly from top to bottom over a 5 second period
- The new firmware is now installed

7) Run DS7 and use the Logger Diagnostic screen to confirm the firmware version



The latest version as of 1st March 2017 is V2.16